



Other CADForce Highlights

- Multi-Jurisdiction / Multi-Agency Dispatching
- Police – Sheriff – Fire – EMS
- Interfaces to outside information
- NCIC, In-State Systems, Paging, E911, GPS, and many more.
- Easy integration with ADSi's DataForce Web LE RMS.
- Mobile Data-Ready
- ProQA Certified
- Simple but detailed Incident History / Address History Tracking
- Customer Site-Specific Modifications
- CADForce is not an "off the shelf" product
- Seamless connection with ADSi's MapForce CAD Mapping
- Unmatched customer service & support
- Several ADSi Customers have been with us for over 20 years
- Customer input often results in software enhancements

ADSi's Public Safety Products

DataForce Web LE, ADSi's state-of-the-art Law Enforcement Records Management System, continues to provide all the functions you might expect from an electronic "filing cabinet," such as secure and dependable record storage and retrieval, enhancing your agencies effectiveness in the court room. However, ADSi has raised the bar in records management, creating software that not only helps you to prosecute crimes – but can help you solve them, too! Utilizing the latest in programming technology, DataForce delivers investigative power to your agency like never before. The DataForce Search global search engine is included as a vital piece of all DataForce Web modules – and "Web" means you can access the system from anywhere in the world via a secure high-speed internet connection.

DataForce Web Fire, is DataForce Web LE's companion product developed specifically for the Fire Service, streamlining the management of all elements of your fire operations including incident reporting, inspections tracking, training, certifications, roster maintenance, apparatus & department inventory, hydrant records, and station logs.

ADSi also offers municipal court software, mug-shot imaging, CAD & records mapping, crime scene photo management, electronic crime scene diagramming, mobile data applications, bar coding for property & evidence and inventory modules, and more.

When you're ready to upgrade or purchase new software, why not consider a company that has been faithfully serving public safety professionals like you for more than 26 years – under the same name, the same ownership, and the same management – A company with a proven track record...one that delivers software on-time and within your budget. That company is ADSi – specialists in public safety software since 1981...and still the right choice.

History of ADSi

For more than 26 years, ADSi has supplied public safety departments with effective and dependable software tools. In fact, ADSi has installed software in more than 100 agencies all across the United States at the City, County, State, and Federal government levels.

The secret to our success is no secret at all: First, we offer great software at a fair price. Second, we support our customers every step of the way (we have customers that have been with us for more than 20 years because we take such good care of them). Third, we listen to our customers – as a customer, you tell us what you need your software to do, and we continually strive to improve the software to exceed your expectations.



Application Data Systems, Inc.

1930 1st Commercial Drive
Southaven, MS 38671

800-730-ADSi (2347) ext. 2046

www.e9.com

CADForce®

COMPUTER AIDED DISPATCH

LAW ENFORCEMENT • FIRE • EMS • MILITARY



CADForce®

COMPUTER AIDED DISPATCH

Public Safety Dispatch Centers have rightly been called the “nerve centers” of emergency response operations. It’s there that life and death decisions must be made as quickly and accurately as possible because the lives of our first responders and our citizens are on the line. Communications Professionals must deliver...every time...all the time. At ADSi, we believe that your CAD should perform at that same consistent level of proficiency...every time...all the time.

ADSi's CADForce was developed with four principles in mind:

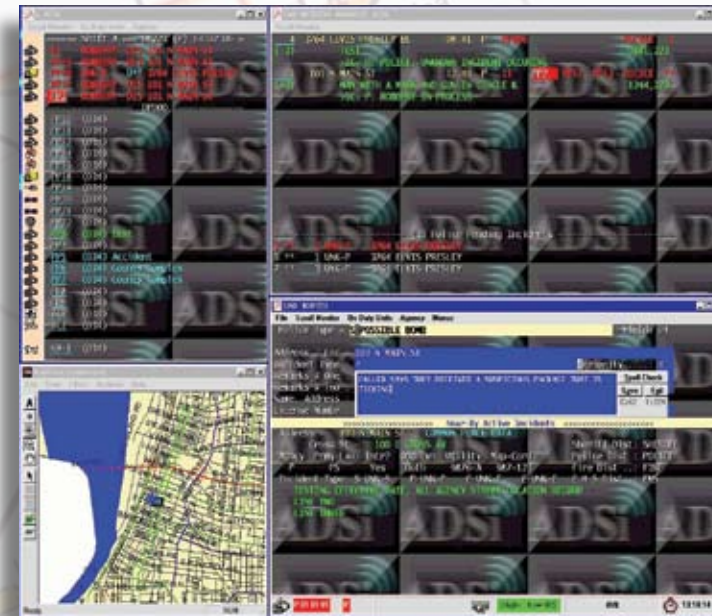
- Dispatchers know how to dispatch - they don't need a software company to tell them how they should do their jobs. Rather, they need CAD to help them do what they already know how to do... faster.
- In the midst of a critical incident, dispatchers don't need to be hindered by endless menu options and complicated computer navigation. Rather, they need CAD to help them do what they know they must do...easier.
- Dispatch Operations are “mission critical.” When lives are on the line, CAD must be there to assist communications professionals when they need it...every time...reliably.
- Public Safety agencies are often held captive to budgetary constraints. Software developers can often lose sight of the goal of providing mission-critical functionality by incorporating attractive “bells and whistles” that serve no vital function in the dispatch process, but add to the cost of the product. ADSi CADForce is designed to be full-featured, but “fluff-free,” delivering vital functionality...sensibly.

ADSi's CADForce is Fast



From its initial development in the early 1980's, ADSi's CADForce software has been designed to make each incoming call for service available for dispatch within 45 seconds or less from the time the call is received. Simple entry of an address and an incident type, followed by a “Quick Transfer” command and the call is available for dispatch, while additional information gathered from the caller can be easily added to the incident once it's dispatched.

Through more than twenty years of development and upgrades, the “45-Second Rule” has remained the goal – and that goal has been met continually, time after time after time.



ADSi CADForce is Simple

In the world of business, it's said that “time is money.” In the world of public safety, especially in the midst of a critical incident - time is everything. ADSi has consistently adhered to the “45-Second Rule” by developing CAD software that follows a logical, streamlined dispatch process unhindered by cumbersome and seldom-used functions or complicated, multi-layered system navigation. Using either a mouse or simple keyboard “colon commands,” there are no time-wasting steps in the dispatch process. Fast is good...and simple is fast.

A dispatcher who uses ADSi CADForce every day said it this way:

“ADSi understands the purpose of CAD in the first place; namely, that a CAD system should help dispatchers do the things they must do, not give them lots of things they could do, but will never actually need to do.”

ADSi CADForce is Reliable

A perfect combination of speed and functionality is meaningless if the system doesn't work when you need it to. That's why ADSi's CADForce software has been developed to take advantage of the well-documented stability of the Linux operating environment, without sacrificing the “user-friendliness” and familiarity of the Windows front end.

Dispatchers are at ease with a comfortable and familiar display, but can also take comfort in knowing that behind the scenes, the Linux OS is steadily cranking away...day after day after day. At least two ADSi customer sites have experienced zero CADForce failures since installation

in the early 1990's...and we'd be happy to provide those references. Nationally, CADForce uptime exceeds 99.9%. That is a staggering percentage, we know...but we also know that public safety professionals shouldn't have to settle for less.

ADSi CADForce is Sensible

Unless your agency has money growing in gardens or scattered all over the floor, budgetary constraints are likely the norm. Fortunately, the principles governing ADSi's CADForce development have resulted in a product that is not only swift, simple, and stable, but sensible, too. By resisting trends to stack the software with unused “extras,” ADSi has maintained a commitment to cost-effectiveness without sacrificing vital functionality. The result is a CAD that is not only user-friendly, but budget-friendly as well.

